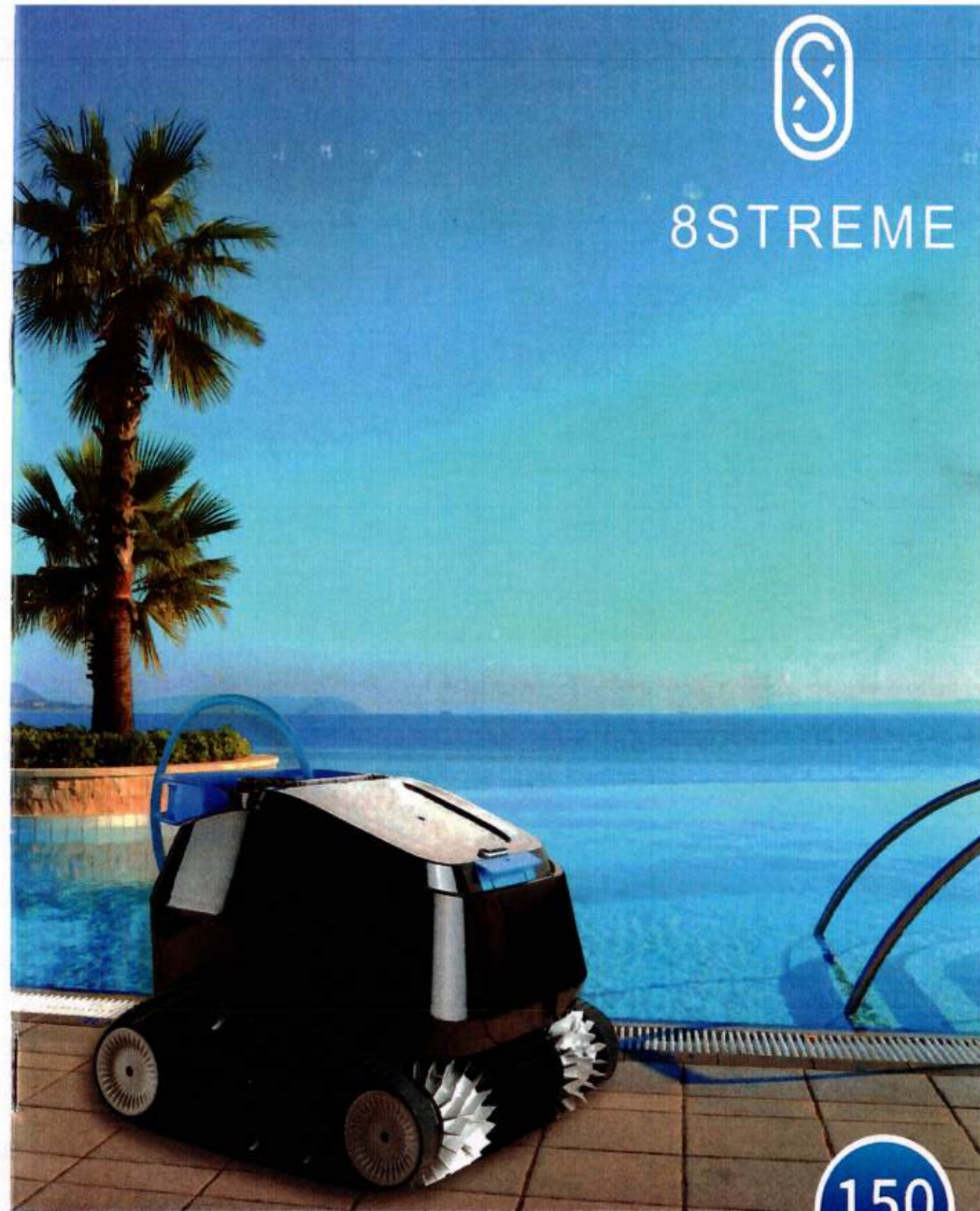




8STREME



150
min

USER'S GUIDE

Product Introduction:

Congratulations on the purchase of your new 8STREME 7311 pool cleaner. It is a powerful autonomous robot delivered ready to use. Ideal for pools of all sizes and in all forms. This robot comes with an easily accessible debris basket along with floating battery pack for ease of use and cleaning range.

Please check the package to make sure that all parts are ready to be installed.

We recommend that you check the connections of the cables from the cleaner to the floating battery pack (chapter 4). If any parts are missing or damaged, please contact 8STREME directly by calling (201) 465-4220 or online at www.8streme.com.



Table of contents

01	Products Features	P03
02	Warning and Safety Information	P03
03	Package Contents	P04
04	Start-Up	P05
05	Climbing Walls	P07
06	Cleaning the Filter Basket	P08
07	Cleaning the Impeller	P09
08	Troubleshooting	P10
09	Spare Parts List	P13
10	Spare Parts Drawing	P14

01 Product Features:

Maximum Depth: 8ft / 2.5m

Maximum Size of Pool: 36ft x 18ft / 10m x 5m

Input current: 100-130V AC / 200-230V AC

Output current: <24V DC

02 Warnings and Safety Information:

2.1 Please refer to the rules of your state/region/country regarding swimming pool safety.

- 2.2 Place the charger at least 11 ft / 3.5 m from the pool.
- 2.3 If the cables delivered are damaged, they must be replaced by the manufacturer, a service center approved by the manufacturer or a qualified person to avoid any risk.
- 2.4 Please make sure that your electrical system is well protected by a 30mA Ground Fault Circuit Interrupter (GFCI).
- 2.5 Do not use an extension cord.
- 2.6 This unit must only be use with the supplied battery pack.
- 2.7 Cleaning and user maintenance shall not be made by children without supervision.
- 2.8 Children shall NOT play with the robot.
- 2.9 Keep the battery pack and charger away from moisture.
- 2.10 Do not use the robot out of the water.
- 2.11 Make sure that the battery pack and/or charger is disconnected before performing maintenance on the robot.
- 2.12 Do not use any damaged power cord or cable.
- 2.13 Do not use the robot if people are in the pool.
- 2.14 Do not use the swimming pool when the cleaner is in the pool.
- 2.15 Remove the robotic cleaner from the swimming pool when not in use.
- 2.16 The robot should be using in a pool whose temperature is between 40°- 95°F or 5°- 36°C.
- 2.17 Make sure to maintain a pH close to 7.2 for optimal performance, especially on the ability to climb walls.
- 2.18 Do not use the robot if you have a counter-current swimming device working.
- 2.19 If the ambient air temperature exceed 95°F/36°C, place the battery charger under the shade.

SAVE THESE INSTRUCTIONS.

Manufacturer: COMPUROBOT TECHNOLOGY COMPANY

03 Package Contents:

- 7311 Robotic Pool Cleaner 01
- Battery Pack Charging Transformer 02
- Detachable Floating Battery Pack 03
- Retrieval Hook 04
- Sample of Fine Filter 05



Quick Facts:

- Our robots are designed to facilitate the maintenance of your pool. However, they are not intended to be the sole tool used to clean a pool full of algae and leaves (ex: end of winter season) In this case you must: use the leaf skimmer, run and clean your swimming pool pump and filter, and may require multiple cleaning cycles.

- A tile coating leads to faster wear of the brushes and belts. Please check these regularly.

- To remove the robot from your pools, attach the supplied retrieval hook to a standard cleaning pole (cleaning pole not included), hook onto the handle of the floating battery pack, pull the battery pack and cable to you until you can grasp the cable. Pull the cable slowly and gently until you can grab the robot's handle. Use the handle to fully pull out the robot.

- In order to access the filter basket, place hands as shown in picture. Push with thumbs to unlock lid.



04 Start – Up:



4.1 Take the power cord from the robot and connect to the battery pack.



4.2 Insert the blue plug into battery pack as far in as you can.



4.3 Take the black cap of the power cord and screw onto the battery pack.



4.4 Hand tighten the cap. Do not use tools to overtighten the cap.



4.5 Unscrew the charging plug cap on top of the battery pack.



4.6 Before inserting the charging cord into the battery pack, take note of the notch on the battery pack that corresponds with the slot on the charging cord. The plug is NOT designed to be inserted at an angle.



4.7 Insert the charging cord into the battery pack. If the cord is not inserted in the correct orientation as indicated with the notch and slot, you can cause damage to the cleaner, battery pack or charger.



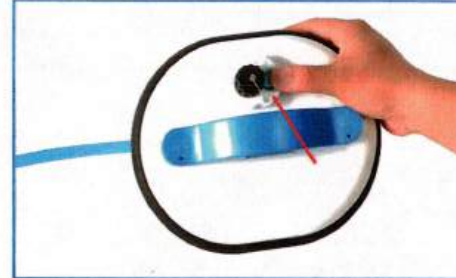
4.8 When charging the battery pack, a LED light on the charger will turn on. A red light will indicate that the battery is charging. A green light will indicate a fully charged battery.



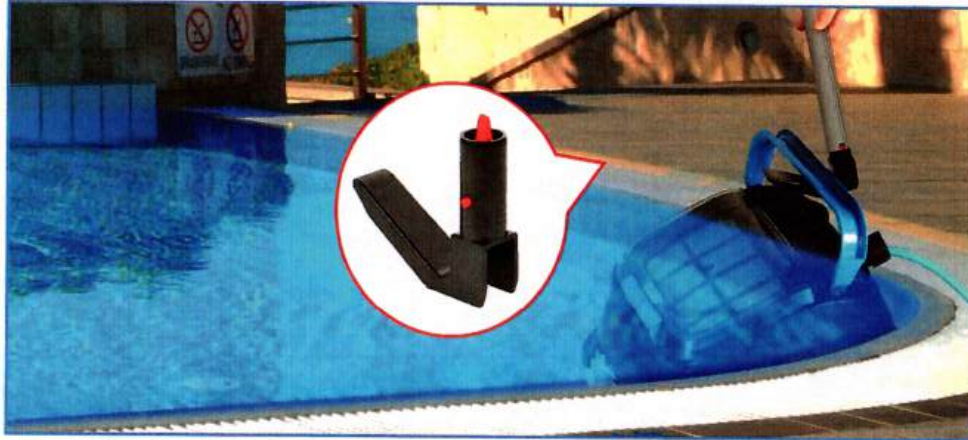
4.9 After fully charging the battery pack, unplug the charging cord and screw back on the cap to the plug on the battery pack. Hand tighten until secured.



4.10 Before tuning on your cleaner, place the cleaner inside your pool and wait until fully submerged in the water. If needed, rock the cleaner underwater to release all air bubbles.



4.11 To activate your cleaner press button at the top of the battery pack. A LED light next to the button will turn on. The robotic cleaner will now run its 2 hour cleaning cycle and then automatically turn off. If you want to turn the cleaner off early, press and hold the button.



4.12 At the end of the cleaning cycle the robot will move to the edge of your pool. Use the retrieval hook supplied with your cleaner to remove the cleaner out of your pool. The tool is designed to hook onto the handle of the cleaner. When the cleaner is close to the surface of the water, use your hand to grasp the handle of the cleaner. Slowly lift the cleaner out of the pool and let the water drain out of the cleaner.

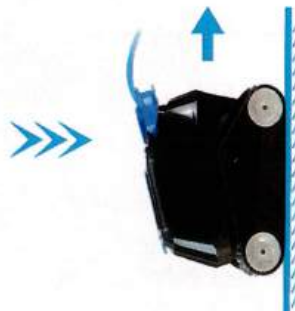
4.13 Do not remove your robot out of water immediately after the end of its cleaning cycle so as not to cause a temperature shock.

4.14 When the cleaner is no longer used for an extended period, screw on all protective caps and store your robot and battery pack indoors.

05 Climbing Walls:

In order to be efficient while cleaning the waterline, the robot is designed to climb up the waterline with the orientation that offers the most effective brushing.

It is therefore normal to see it climb to the waterline only by the side with the handle.



06 Cleaning the Filter Basket



6.1 In order to access the filter basket, place hands as shown in picture. Push upward with thumbs to unlock cover.



6.2 Use both hands to lift the basket with the handles on the sides of the basket.



6.3 Open the lid of the basket by pulling the tab on the front of the basket and empty contents.



6.4 Empty the debris inside the basket. Use a jet of water to rinse the faces inside and outside the basket filter panels. Also inspect and cleaner the inside and outside of the robot.



6.5 Once cleaned, replace the basket in the robot. If the basket is not properly aligned, it is not possible to close the cover of the cleaner.



6.6 Press down the handle to lock your basket.

07 Cleaning the impeller

Some debris can clog or be wrapped around the impeller of the pump. By force, these debris can hinder the proper functioning of the robot or even damage the motor. Regular visual inspection is part of the normal maintenance of the robot.



7.1 Use a flat screwdriver to remove the protective grill.



7.2 Use a wrench to remove the nut in the middle of the impeller. With one hand, hold down either the tool or the impeller and use your other hand to turn the other.



7.3 Slide the impeller up to remove it and all inspection of the shaft.



7.4 Check if hair or any foreign object is caught under the impeller. Remove any found.



7.5 Install the impeller back on. Only lightly tighten the nut. DO NOT overtighten or else it will cause damage to the impeller. The impeller should be able to shift up and down with good free-play.

08 Troubleshooting

PROBLEM	CAUSES	SOLUTION(S)
The robot floats on the surface.	<ul style="list-style-type: none"> -Incomplete immersion of the robot in the pool. -Water level in the pool Use of the fine filter. 	<ul style="list-style-type: none"> -When you put the robot in the pool let it sink and reach the floor before your turn it on. If the robot does not fully rest on the floor, there may be air pockets inside the robot and will need to be rocked or rotated out of the robot. -If you use an optional fine filter, remove the filter from its plastic wrap, immerse the filter in the water so that it is wet before putting it in the robot. -If your pool water level is too low, the robot might take in air if it touches the top of stairs or seats; in this case adjust the level of the pool.
The robot does not clean all areas of the pool.	<ul style="list-style-type: none"> -Pool size may be larger than maximum pool size listed on Product Features. -There may be objects preventing the robot from covering all areas. 	<ul style="list-style-type: none"> -Fully charge your battery pack and run another cleaning cycle. -Our robots are designed to facilitate the maintenance of your pool. However, they are not intended to be the sole tool used to clean a pool full of algae and leaves (ex: end of winter season) In this case you must use the leaf skimmer, run and clean your swimming pool's pump and filter, and may require multiple cleaning cycles. -When submerging the robot, place it at the center point of the pool. If your pool is oval or rectangular, this point is the middle of the length
The robot does not pick up debris during operation. Fine particle (dust, dirt, pollen, etc.) are ejected by the impeller.	<ul style="list-style-type: none"> - The robot does not receive enough power. - Basket clogged / full - An object is stuck in the impeller or the impeller cover. - Debris are too fine. The robot is made to pick up particles more than 50 microns (with fine filter inside) 	<ul style="list-style-type: none"> -Check the connection of the cables. -Clean the basket and filter panels. Clean the fine filter if you use this accessory. - Check if the basket is properly inserted. (See chapter 06 Cleaning the Filter). If basket is not fully attached press down to lock it. -Check that there are no objects in the impeller or impeller cover. -Use a fine filter accessory (SKU 71170) Please note that this cleaner should be used in conjunction with your swimming pool's filter to ensure removal particles less than 50 microns.

Please contact 8STREME at www.8streme.com.br (201-465-4220) if you have any questions or problems

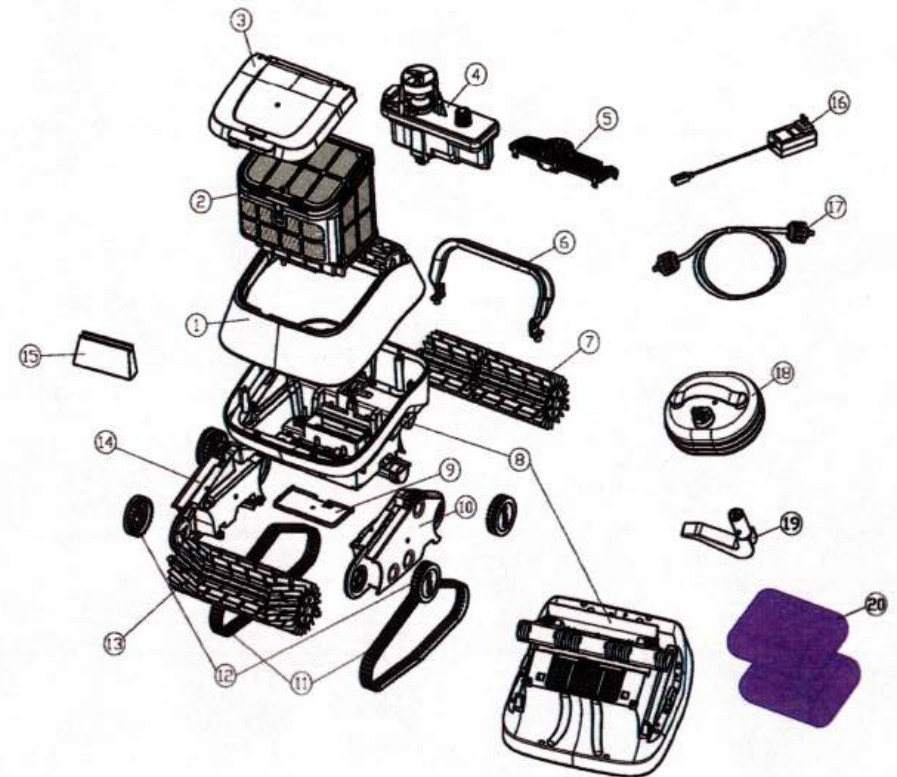
PROBLEM	CAUSES	SOLUTION(S)
The robot moves in one direction	<ul style="list-style-type: none"> -An object blocking the rollers or wheels of the robot. -An object is interfering with the movement of the robot 	<ul style="list-style-type: none"> -Check that there are no foreign objects in or under the tracks, roller or wheels of the robot. -Check that there are no foreign object blocking the hydraulic circuit such as water intake or impeller.
The robot does not move and the water pump does not work either. The robot doesn't work anymore	<ul style="list-style-type: none"> - The robot is not connected to a battery pack -Power is off The robot encountered a fatal error and turned off 	<ul style="list-style-type: none"> -Check that the battery pack is turned on and that the LED light is turned on. -Check that the LED light stays turned on during the cleaning cycle. -Check all connections of the robot to the battery pack.
The pump turns on but the robot does not move. The robot turns on but stays on the spot.	<ul style="list-style-type: none"> -No / not enough power is transmitted to the robot. -An object blocks the roller, belts, or wheel of the robot or its path Possibility of motor problems 	<ul style="list-style-type: none"> -Check all connection of the robot to the battery pack -Check that there are no foreign objects in the impeller, belts, roller and wheels. -Check that there are no foreign object blocking the hydraulic circuit such as water intake or impeller. -Contact After-Sales Service
Robot does not climb walls	<ul style="list-style-type: none"> -The robot is too heavy. -The water flow is not enough. -Walls are too slippery. pH level is incorrect. 	<ul style="list-style-type: none"> - Check that the filter basket isn't full of debris. - Check that there are no foreign object blocking the hydraulic circuit such as water intake or impeller. - Presence of algae or oily deposits on the wall. - Remove algae using proper chemical treatment of your water and manual brush to remove oily deposits. - Check that the handle of the robot is below the floating cable.
The robot goes around in circles	<ul style="list-style-type: none"> -A belt or wheel is damaged or blocked A air pocket is trapped in the robot 	<ul style="list-style-type: none"> - Check the condition of the drive belts and wheels. If necessary, replace any faulty parts. - Rock and rotate the robot underwater until no more air bubbles come out of the cleaner. Make sure the robot lies flatly on the floor of the pool when power is off.

PROBLEM	CAUSES	SOLUTION(S)
The robot stops after a few minutes	<ul style="list-style-type: none"> -Connection of the floating cable. -Possibility of fault in floating cable Possibility of motor leakage. 	<ul style="list-style-type: none"> - Check the connection of the floating cable. Disconnect and reconnect as needed. - Check the status of the connectors at the ends of your cables (damaged, rusted, etc).
The robot moves slower than before	<ul style="list-style-type: none"> -The robot is too heavy. -The flow is not sufficient Battery pack is near end of life. 	<ul style="list-style-type: none"> - Check that the filter basket is not full. - Check that there are no foreign objects in the impeller, belts, roller and wheels. - Check that there are no foreign object blocking the hydraulic circuit such as water intake or impeller. - Check if LED light stays on during cleaning cycle or that the robot lasts the full cleaning cycle. Contact after sales service if it does not.
No LED lit on the battery pack	<ul style="list-style-type: none"> -The power is not reaching the cleaner. -Battery pack is near end of life. -Battery pack may not be fully charged Possibility of motor problem. 	<ul style="list-style-type: none"> - Check that the robot lasts the full cleaning cycle after fully charging the battery pack. - Check if battery pack is charging and running out of power abnormally quickly. - Wait until the charger has a green LED light before using the robot. - Check the cable connectors. - Contact after sales service if it does not.
No LED like on Charger. LED light does not change color on charger.	<ul style="list-style-type: none"> - Bad connection between outlet and charger. - Bad connection between charging cord and battery pack - The charging controls may not be functioning Your electrical outlet is not working. 	<ul style="list-style-type: none"> -Check the status of the FGCI on your outlet. -Plug in another appliance to see if electricity is flowing to the outlet. -Check the connection of the charging cord to the battery pack. -Check if charger is fully connected to the outlet. -Check the metal connectors in charging cord and battery pack for signs of damage (rust, corrosion, etc.)Contact after sales service. -Presence of algae or oily deposits on the wall. Remove algae using proper chemical treatment of your water and manual brush to remove oily deposits. -Check that the handle of the robot is below the floating cable.
The robot leaves traces on the floor or walls.	<ul style="list-style-type: none"> Wear on the brushes, rollers or transmission belt. 	<ul style="list-style-type: none"> These parts are wear-and-tear items. Please check them regularly and replace as necessary.

09 Spare Parts List

Item	Part No.	Item Description
01	71000	Top Shell
02	71010	Filter Basket
03	71020	Top Lid
04	71052	Pump Motor Block
05	71070	Pump Cover
06	71220	Handle
07	71090	Geared Roller
08	71100	Bottom Chassis
09	71110	Fast Drain Flap
10	71120	Left Support Assembly
11	71130	Drive Track Pair
12	71142	Drive Wheel Set
13	71159	Front Roller
14	71160	Right Support Assembly
15	71012	Non-return Inlet
16	36132	30W Standard Charger (included)
	36142	100W Fast Charger (Optional)
17	64151	10 ft Floating Cord
18	30591	Floating Battery Pack
19	64110	Retrieval Hook
20	71170	Fine Filter Pad (Optional)

10 Spare Parts Drawing





 www.8streme.com |  201-465-4220