




GYROBIC 

CE  **RoHS** **FC** 

CONFORMS TO UL STD.1081.
CERTIFIED TO CSA STD.
C22.2 NO.218.1.

H2O-HERO

Instruction Manual

H2O-HERO

Congratulations on the purchase of your new cordless Robotic Pool Cleaner H2O-HERO by 8streme.

This powerful autonomous cleaner is easy to use and makes pool maintenance simple and smooth. This cleaner comes with a large and efficient filter able to hold all kinds of debris. This cleaner has two 90-minute cleaning modes: A **floor-only(default)** (Cleans the floor only) and a **fully automatic mode** (Cleans the floor and walls). Please refer to the section **Cleaning Modes** for more details.

Extra filter or other parts can be available at your dealer or contact us at www.8streme.com. If the robot is experiencing any problems contact us by email at techsupport@saltechllc.com or call us by (201) 465-4220.

Warning and Safety

When installing and using this electrical equipment, basic safety precautions should always be followed, including the following:

- **Refer to the laws of your state / county regarding swimming pool safety.**
- Keep the charger away from pool edge by at least 6 ft.
- Ensure your electrical outlets are properly grounded and have a Ground Fault Current Interrupter (GFCI) protected when you use the charger.
- Do not run the robotic cleaner out of water.
- Make sure the robot is turned off before any maintenance.
- Do not operate if robotic cleaner is damaged.
- Do not operate with people swimming in the pool.
- Remove the robotic cleaner from the swimming pool if not in use.
- For use in water with temperatures between 50-95°F.
- Please empty and clean the filter after every use.
- This robot does not clean steps.
- Recharge only with the charger specified by the manufacturer. A charger that is suitable for one type of battery pack may create a risk of fire when used with another battery pack.
- Do not use an appliance that is damaged or modified. Damaged or modified batteries may exhibit unpredictable behavior resulting in fire explosion or risk of injury.
- Follow all charging instructions and do not charge the battery pack or appliance outside of the temperature range specified in the instructions. Charging improperly or at temperatures outside of the specified range may damage the battery and increase the risk of fire.
- Have servicing performed by a qualified repair person using only identical replacement parts. This will ensure that the safety of the product is maintained.
- Do not modify or attempt to repair the appliance or the battery pack.
- Do not expose a battery pack or appliance to fire or excessive temperature. Exposure to fire or temperature above 130 °C may cause explosion.
- Have servicing performed by a qualified repair person using only identical replacement parts.
- This will ensure that the safety of the product is maintained.
- **WARNING** – To reduce the risk of injury, do not permit children to use this product unless they are closely supervised at all times.
- The Power adapter cannot be used outdoors. Charge indoor.
- For use only with adapter types DSS48-2501700、DSS28-2521000-E、DSS28-2521000-B、DSS28-2521200-D.

SAVE THESE INSTRUCTIONS.

Manufacturer:COMPUROBOT TECHNOLOGY COMPANY

For optimum performance, please ensure your pool is in the following conditions:

- **PH level:** 7.0 – 7.8
- **Chlorine Level:** Minimum 3 ppm
- **Alkalinity:** 80 – 160 ppm
- **Calcium Hardness:** 150 – 400 ppm

Package Contents

- Robotic Pool Cleaner
- Battery Charger
- Retrieval Hook
- Multi-purpose wrench

Battery Charger, Retrieval Hook and Multi-purpose wrench are packaged inside of the robot



Please check the packaging to ensure all parts are there and ready to install. If the robotic cleaner is not functioning properly or if it is damaged, contact **8Streme** at techsupport@saltechllc.com or call (201) 465-4220.

Storage

When you do not wish to use the robotic cleaner for an extended period of time, please properly store your robotic cleaner:

- Empty the filter bag of debris, and use a hose to rinse the bag and robot thoroughly. Make sure the charge port is completely sealed and then rinse the entire cleaner with fresh clean water.
- Dry the cleaner and make sure there is no water still left inside your cleaner. Store robot in an area out of direct sunlight/rain/frost.
- Fully drain the robot of the cleaner before storing the robot for long periods of inactivity.

When charging the cleaner or when just temporarily leaving the robot out of the pool, do not allow the robot to rest under direct sunlight or outside when ambient air temperature exceeds 105°F.

Getting Started



1. Find the charge port located on top of the robot and under the handle.



2. Unscrew the cap for the charge port. Before continuing to the next step, focus attention on the notch in the charge port and the corresponding slot on the charger plug. The plug is not designed to be inserted at an angle.



3. Plug in the charger plug in the orientation as defined by the notch and slot. **If the plug is forcibly inserted incorrectly, you will cause damage to the charger, the battery or the robot.**



4. A red light on the charger will turn on indicating it is charging up the robot. The indicator light will turn green when it is done.



5. After fully charged, unplug the charger plug and screw the cap back onto the charging port until it sits tight on the charge receptacle.

KEEP IT DRY!

When charging the robot, ensure the charge receptacle is dry. Charging is done in a dry environment and not under direct sunlight.



WARNING:

Do not operate the robot cleaner out of water as it will damage the cleaner.



6. Bring your robot to the pool side, press and release the blue colored rubber button. After 3 seconds you will hear “**BEEP**”, That is the floor only cleaning mode.

If you wish to use the other cleaning mode, press and release the button twice. After 3 seconds you should hear “**BEEP, BEEP, BEEP**”, That is full automatic floor and wall cleaning mode.

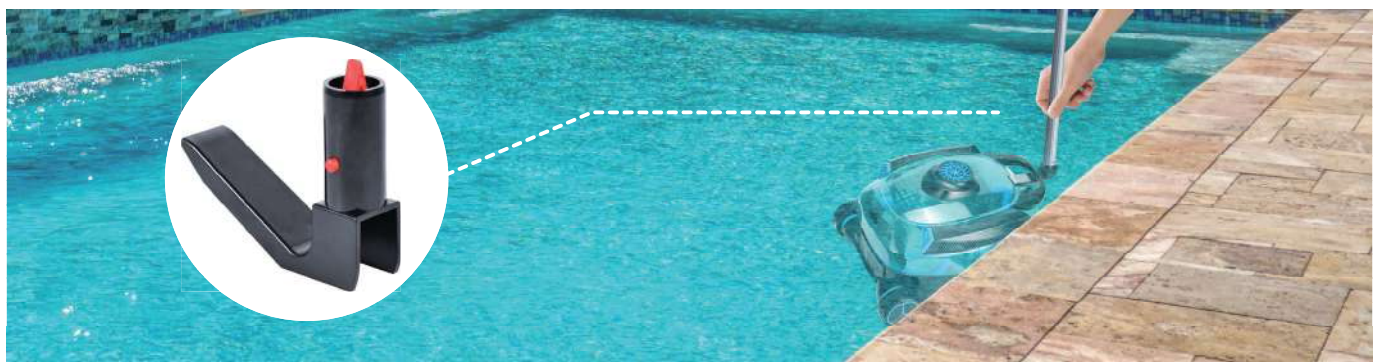
NOTE: To change cleaning modes, you must first turn off the cleaner (step 8) before pressing the desired number of times to turn on the cleaning mode you want.



7. A blue LED will blink for 20 sec. Submerge the robot under water, rock it sideways or back-and-forth to get rid of any air trapped inside the body, then push it down towards the pool floor.



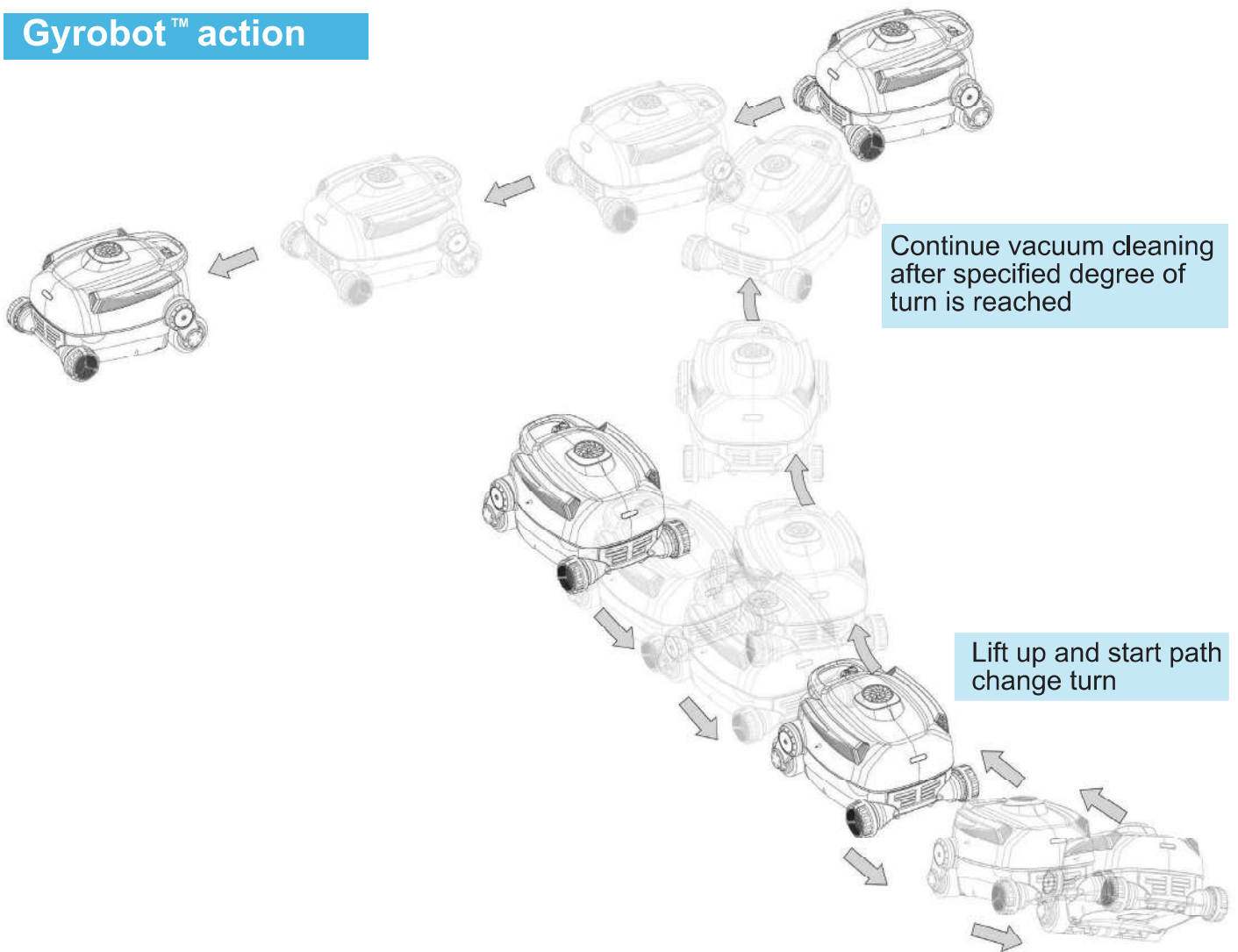
8. If you want to stop the cleaning operation earlier, you can shut the robot down manually by pressing and holding the blue button for 3 seconds.



9. This pool robot will stop at the pool side waiting for you to take it out after it finishes its 90-minute cleaning cycle. To remove the robot from your pool, attach the supplied retrieval hook to a standard cleaning pole (cleaning pole not included), hook onto the handle of the robot. Lift the robot towards you until you can grab the robot's handle. Use the handle to fully pull out the robot.

Cleaning Modes:

Gyrobot™ action



How to reset the robot



In case the robot behave weird, possibly there is water entry at the charge receptacle or the charger plug itself. To reset the robot:

- (1) Wipe the charge receptacle to make it dry. Use a Q-tips to dry the charger plug too.
- (2) Charge the robot in a regular way. This is how the robot can be reset.
- (3) Screw the cap all the way down until it sits on the charge receptacle.

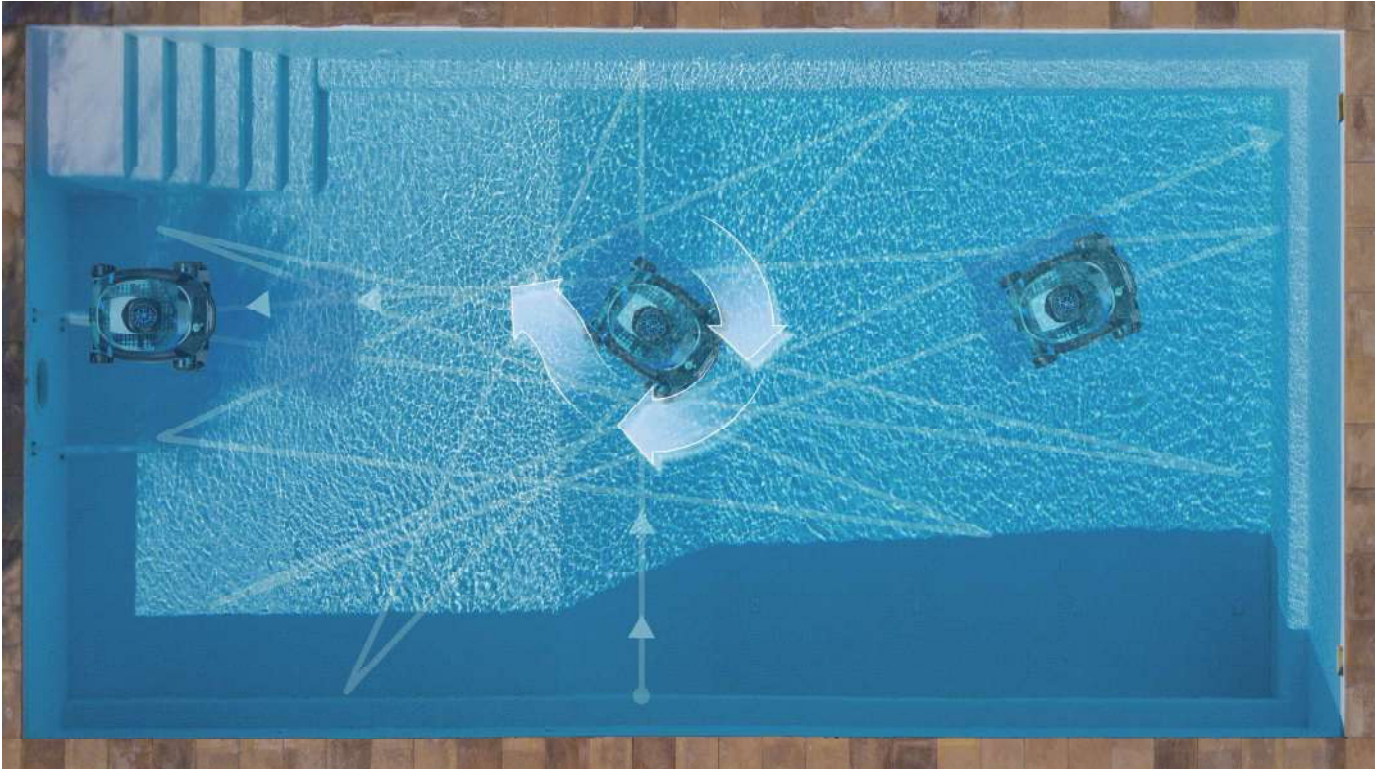
Now the robot should function the way it should be.

Floor only mode:

When selected the robot will **only clean the floor of your pool** for a faster cleaning.

For the duration of its 90-minute cleaning cycle, the robot will traverse across your pool and upon reaching a wall, will reverse direction to go across to the opposite end. While the robot may tilt upwards, it will not climb your wall during this mode.

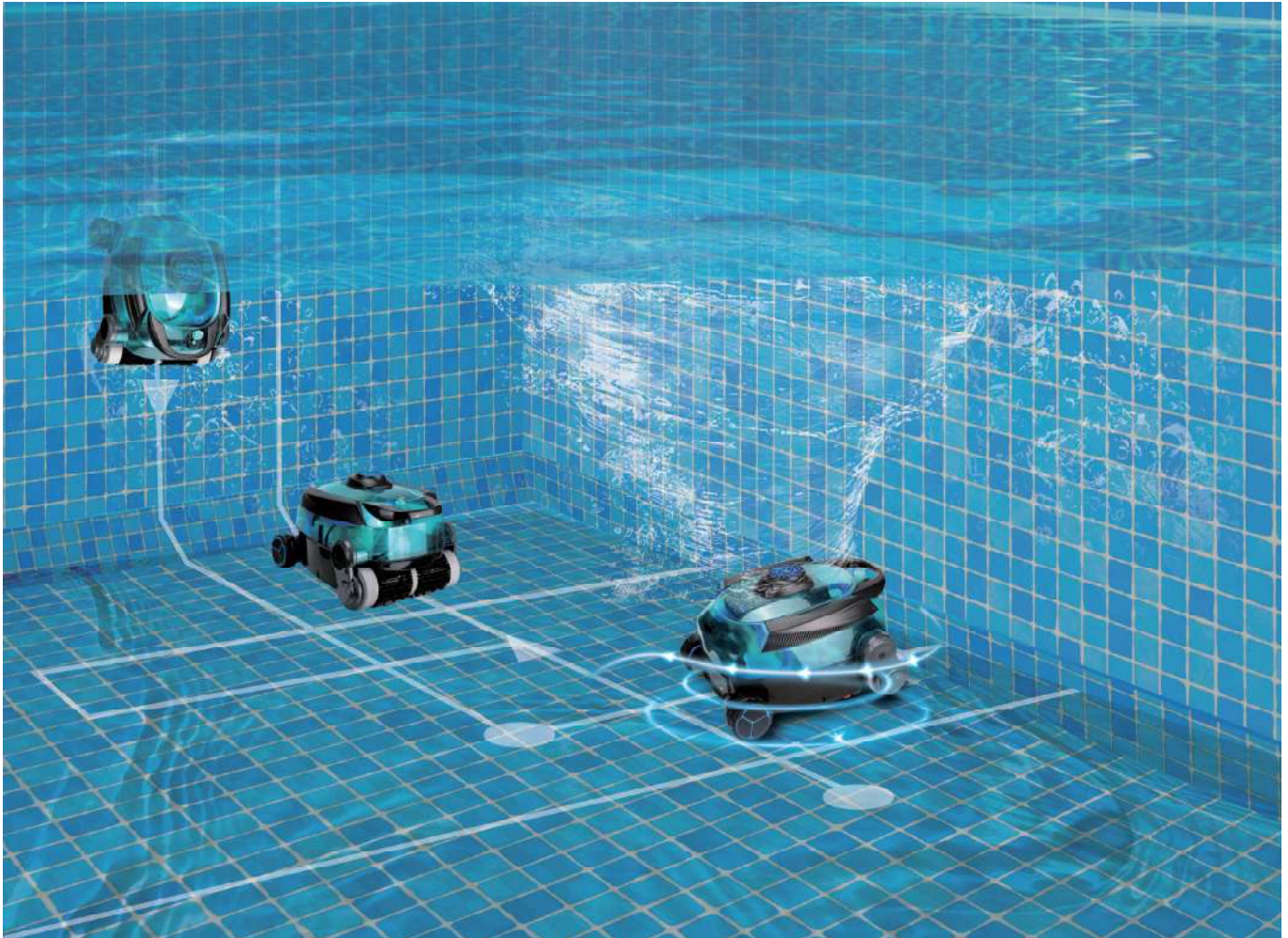
At certain moments of the cleaning cycle, the robot will perform a turning action instead of completely traversing across your pool.



Note: Our robots are designed to facilitate the maintenance of your pool. However, they are not intended to be the sole tool used to clean a pool full of algae and/or excessive debris (ex: end of winter period.)

In this case you must: Use the correct pool maintenance chemicals as required by the state of your pool, clean and run the swimming pool's pump and filter, and it may require multiple cleaning cycles.

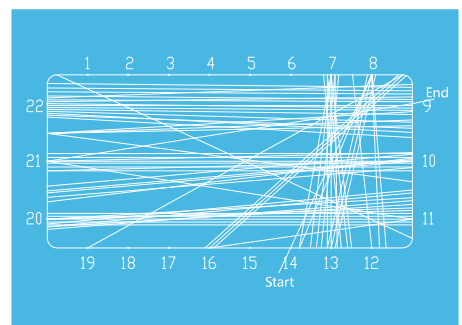
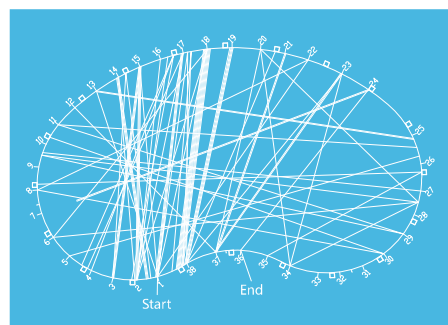
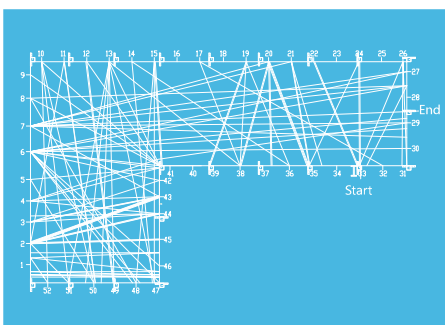
Fully automatic mode:



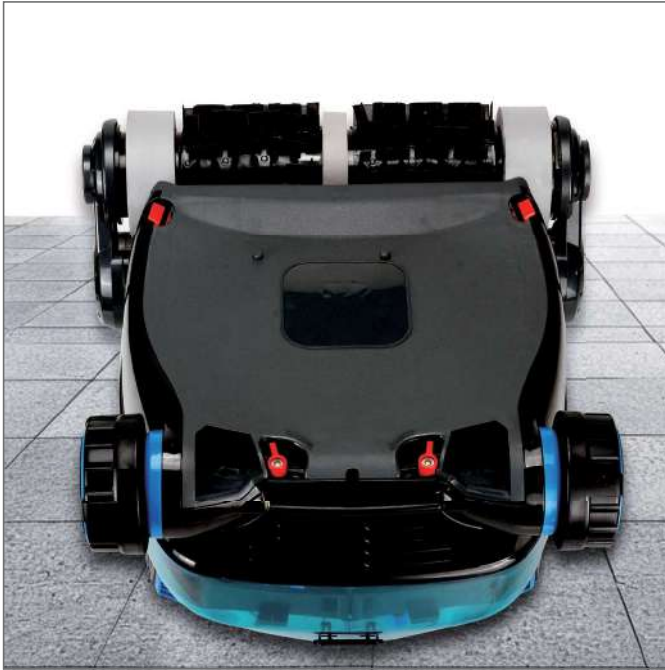
When selected, the robot will be **cleaning the floor of your pool and climb the walls while scrubbing it.**

For the duration of its 90-minute cleaning cycle, the robot will traverse across your pool and automatically climbs when reaching a wall. Please note that the robot only climbs in one direction.

At certain moments of the robot's cleaning cycle, the robot will perform a Gyrobot™ action instead of completely traversing across your pool. This Gyrobot™ action allows the pool robot to make a cleaning path change at the middle of the pool floor. It does not rely on wall climbing to change cleaning path direction and therefore insensitive to pool configuration. Round pool, rectangular pool or even L shaped pool. Any pool, any size.



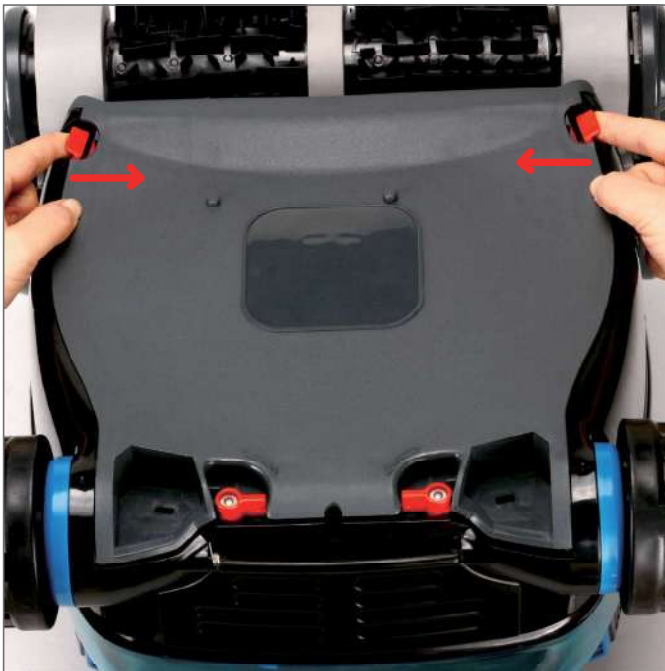
Cleaning the Filter Bag:



1. Place the pool robot on the floor with its top side down.



2. Turn the two red tabs at the front along the arrows imprinted next to it. That is inwards and towards the front.



3. Press in the two red clips at the rear end. With the clips pressed, lift up the lid.



4. Pull the red ribbon near the front marked "PULL TO REMOVE BAG".

Getting Started



5. Empty out any debris inside the bag.



6. Flip the bag inside out and then use a hose to spray water from inside the bag frame. It may require additional washing by hand or even washing machine if the bag is very dirty. DO NOT machine dry the filter bag.



7. Spray water to clean the lid and also the robot body.



8. Flip the bag right side out when done, then place the cleaned filter bag onto the lid.

Getting Started



9. Start at wide side (by the two red clips) and push the frame in.



10. Insert the frame behind the tabs on the lid's sides.



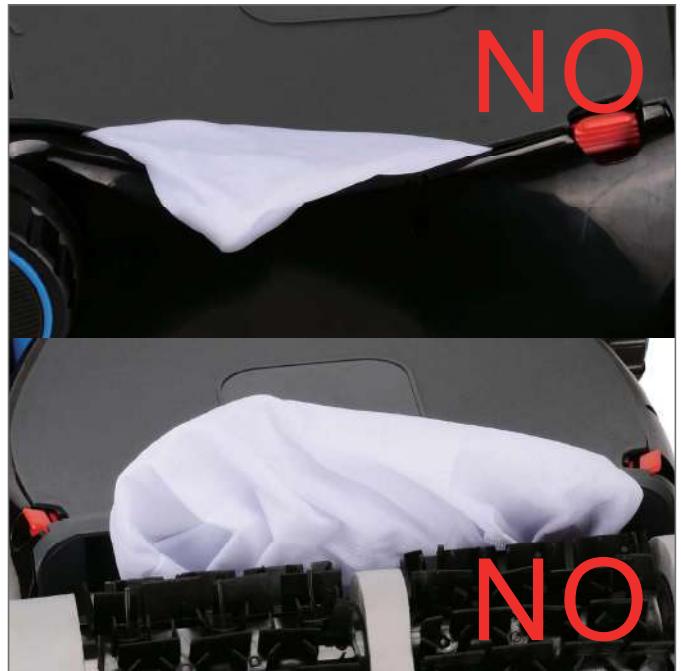
11. Finally push down at the two front corners. Check to make sure the filter frame fits snugly with the bottom lid.



12. Pick up the lid with the bag side down, place the bag and lid back into the pool robot bottom. Start at the narrow end front.



13. Press down on the lid until the two red clips near the roller end snap back into place with an audible sound.



14. The lid will not seal properly if any part of the filter bag is outside or clamped between the lid and the pool robot. That will lower its cleaning effectiveness.



15. Turn the two red tabs to lock the lid front.

Cleaning the Impeller

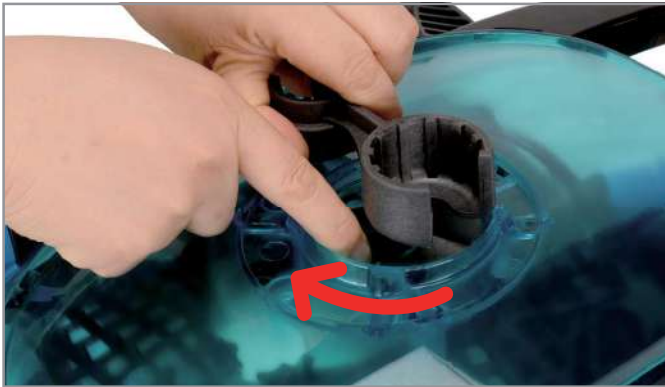
If you have pets that loves swimming, you may need to check the impeller frequently and before you store this pool robot away in winter. Objects stuck in or under the impeller will hinder the robot's ability to clean and may cause damage to the robot.



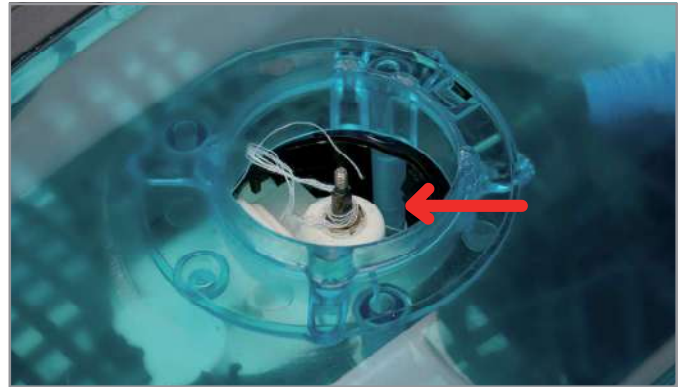
1. Remove the screw at the front and then lift the impeller cover up.



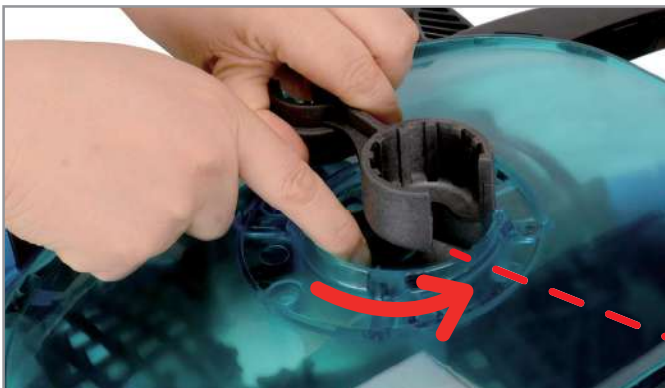
2. Use the supplied Multi-purpose tool to remove the nut in the middle of the impeller. With one hand, hold down either the tool or the impeller and use your other hand to turn the other.



3. Slide the impeller up to remove it and allow inspection of the shaft.



4. Check if hair or any foreign object is caught under the impeller. Remove any found.



5. Install the impeller back on. Only lightly tighten the nut. **DO NOT** over-tighten or else it will cause damage to impeller. The impeller should be able to shift up-and-down with good free-play.



Troubleshooting:

Symptom	Possible reason(s)	Solution(s)
No charger indicator light	<ul style="list-style-type: none"> • Electrical outlet / GFCI. • Defective charger. 	<ul style="list-style-type: none"> • Try another outlet. • Replace the charger.
Pool robot cannot take a charge	<ul style="list-style-type: none"> • Charge port is wet or charge plug not fully inserted. • Battery is too old. 	<ul style="list-style-type: none"> • Check if there is water at charge port. Turn the pool robot upside down and let it sit there overnight to drain the water. • Replace the pump motor block.
Pool robot floats	<ul style="list-style-type: none"> • Clogged/full filter bag. • Impeller jammed by hair or foreign objects. 	<ul style="list-style-type: none"> • Clean the bottom lid and filter bag. • Pry open the impeller cover and get rid of hair or any foreign objects.
Cannot pick up dirt	<ul style="list-style-type: none"> • Filter bag is full. • Bottom lid not properly assembled. 	<ul style="list-style-type: none"> • Remove the trash and clean the filter bag. • Refer to filter bag cleaning section and make sure green filter bag can't be seen after the bottom lid is properly closed.
Robot runs back and forth a couple times and then stops	<ul style="list-style-type: none"> • Front wheel is jammed. • Defective drive. 	<ul style="list-style-type: none"> • Both front wheels should spin freely. Clean if necessary. • If wheels are free spinning, then it is he sensing wheel needs replacement. • Replace the drive motor.
Robot cannot climb wall or steps	<ul style="list-style-type: none"> • pH too high or chlorine level too low. • This robot is not designed to climb steps or scrub waterline. 	<ul style="list-style-type: none"> • Bring the pH and chlorine to recommended levels. • Clean the scum line and step manually, push the dirt to the pool floor and allow this robot to pick the dirt up.
Filter bag clogs too easy	<ul style="list-style-type: none"> • Too much dirt in the pool. • Filter bag is not well cleaned. 	<ul style="list-style-type: none"> • Clean the filter bag more often. • Hand wash or use washing machine to clean the filter bag.
Robot runs back and forth, or hits the wall but not reverses, or climbs to waterline and floats	<ul style="list-style-type: none"> • Water entry at charge receptacle 	<ul style="list-style-type: none"> • Go to "How to reset the robot" section and follow the steps

If you require additional assistance, contact us at techsupport@saltechllc.com or call (201) 465-4220.

1 Year Limited Warranty Information

- The warranty obligations of 8Streme shall be limited to repair or replacement of product or any defective component at the discretion of 8Streme. The repair or replacement may include the use of refurbished components and/or units. 8Streme will not be liable or responsible under any circumstances or in any amount for any consequential or incidental damages, for any injury or damages to persons or property using or used in connection with this product, or for loss of profits or other costs or expenses of any kind or character.
- Any consumer request for warranty service will be handled directly by 8Streme. If a customer would like to make a warranty claim, they are to call 8Streme designated service agent at **(201) 465-4220** for troubleshooting. Our tech support team will troubleshoot the product and replace any defective parts or schedule the product for an in-house service appointment. If the product is sent in for service it will be sent back to the consumer at 8Streme's expense.

Warranty Service

- Please contact 8Streme for approval at techsupport@saltechllc.com or call **(201) 465-4220**. Further information for your warranty, depending on your circumstances, will be given to you if approved.

What is not covered

- Use of the robotic cleaner other than for normal domestic private swimming pool purposes, e.g., for commercial or rental purposes.
- Wear and tear parts which includes filter bag, foam collar or brush on the drive roller.

Warranty Limitation and Exclusions

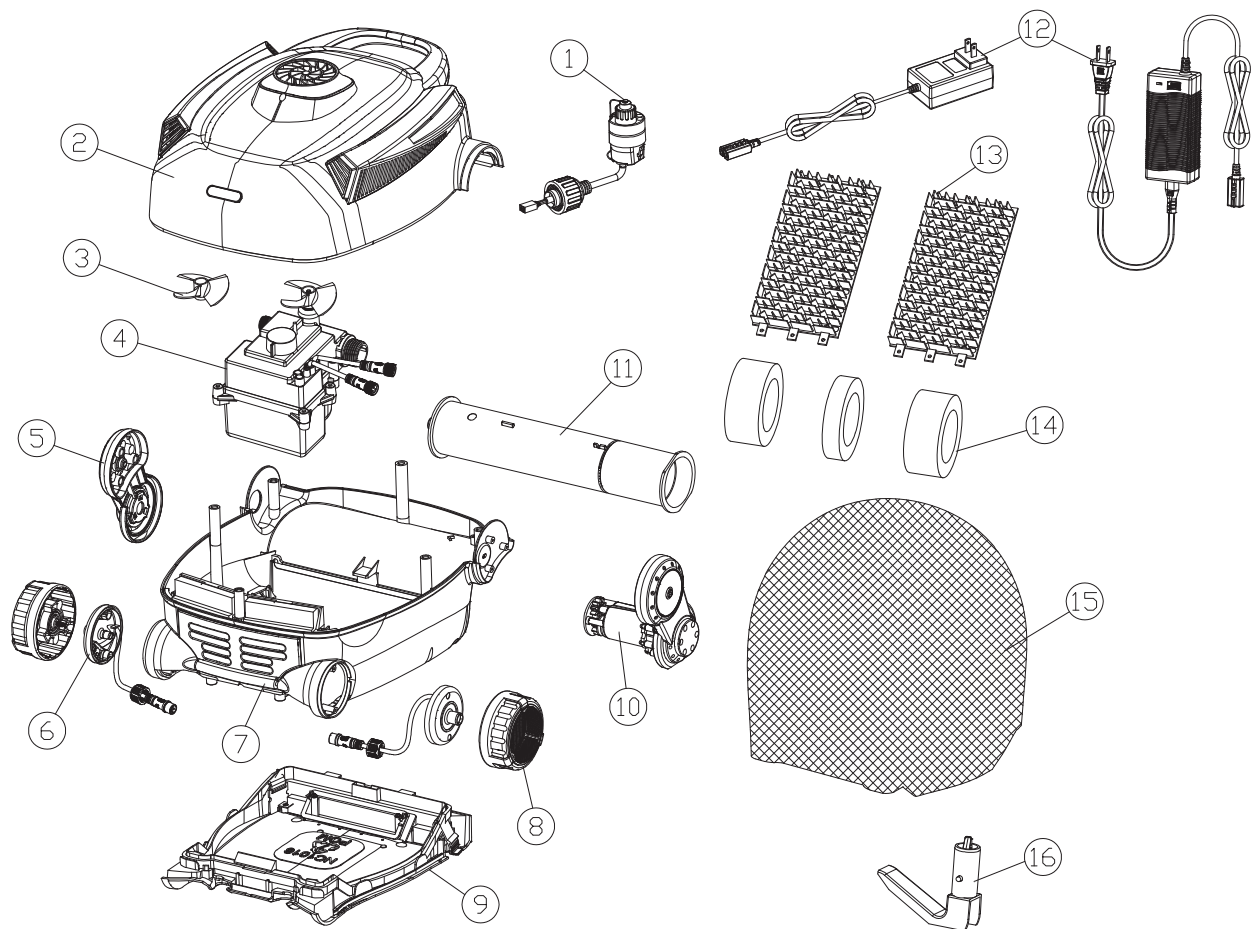
Your remedy for breach of this warranty is limited to the warranty service described above. 8Streme will not be liable for any consequential damages or incidental damages you may incur in connection with your purchase and use of your robotic pool cleaner.

Filter, scrubber pads, shoulder brush and other general wear and tear parts are not covered by this warranty.

Caution:

Some vinyl liners are more susceptible to surface wear and pattern removal than others, caused by objects such as brushes, toys, floats, chlorine dispensers, and automatic pool cleaners coming into contact with the vinyl surface. Such patterns can be easily scratched or abraded merely by rubbing the surface with a brush. Pattern ink can also rub off when they come into contact with objects in the pool. 8Streme is not responsible for, nor does this limited warranty cover pattern removal, abrasion, and markings on or to any kind of vinyl liner.

Product Component Diagram



Item	Part Number	Parts Description
1	64000	Charge Receptacle
2	NC10111	Top Shell
3	NC1015	2.5" Impeller
4	85023	Pump Motor Block with built in battery
5	64030	R Roller Support Bracket, No Drive
6	NC10021	Left, Right Front Wheel Support with Sensor
7	NC10011	Bottom Shell
8	NC10020	Left, Right Front Wheel
9	NC1026	Bottom Lid, dark grey
10	64090	L Roller Support Bracket. With Drive Motor
11	64100	Drive Roller Tube
12	36112	1A Standard Charge Adapter (Included)
	36121	1.7A Fast Charge Adapter (Optional)
13	64080	Rubber Brush Pad 2 pcs set, black
14	64120	Foam Collar 3 pcs set
15	NC10171	Filter bag
16	64110	Retriever Hook (cleaning pole not included)