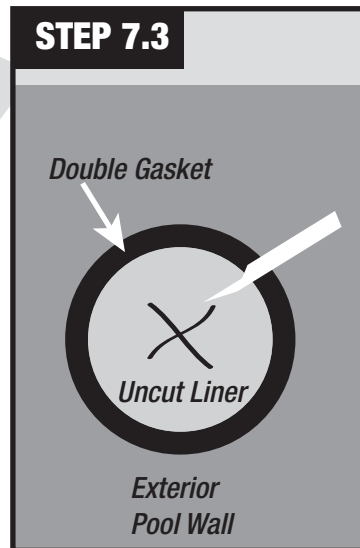
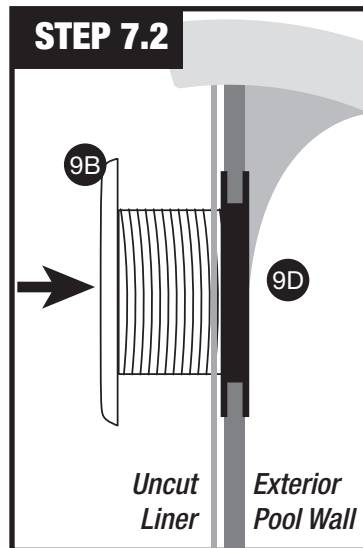
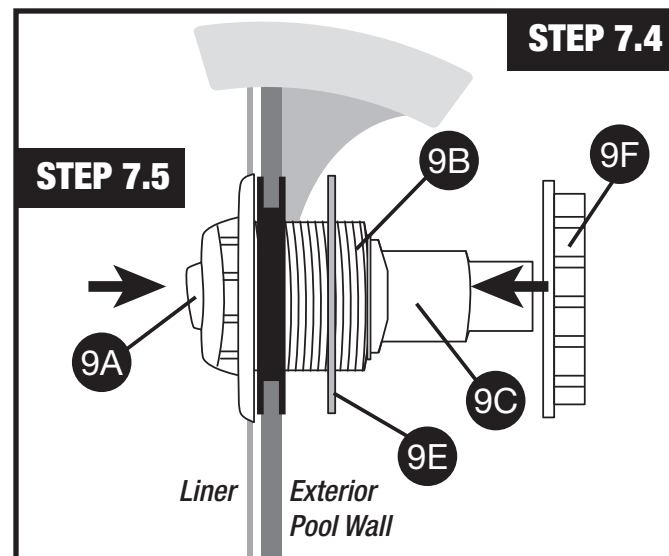


STEP 7 Return Fitting Installation *(continued)*



STEP 7.2 Align the return fitting (9B) and push (from inside of the pool) the threaded end against the liner and the return cutout in the pool wall.

STEP 7.3 Apply outward pressure to the return fitting (9B) and use a utility knife to cut an "X" in the center of the exposed liner from outside the pool at return cutout in the pool wall (be careful not to cut the double gasket). This will allow the return fitting to slide through the liner, gasket and pool wall. The return fitting will now be fully pressed against the liner, gasket and the wall on the inside of the pool. Carefully trim the excess liner material from around the fitting threads on the outside of the pool.



STEP 7.4 Working from the outside of the pool, screw hose fitting (9C) into return fitting (9B), place plastic washer (9E) onto return fitting threads. Using lock nut (9F) secure washer/return fitting in place by tightening lock nut.

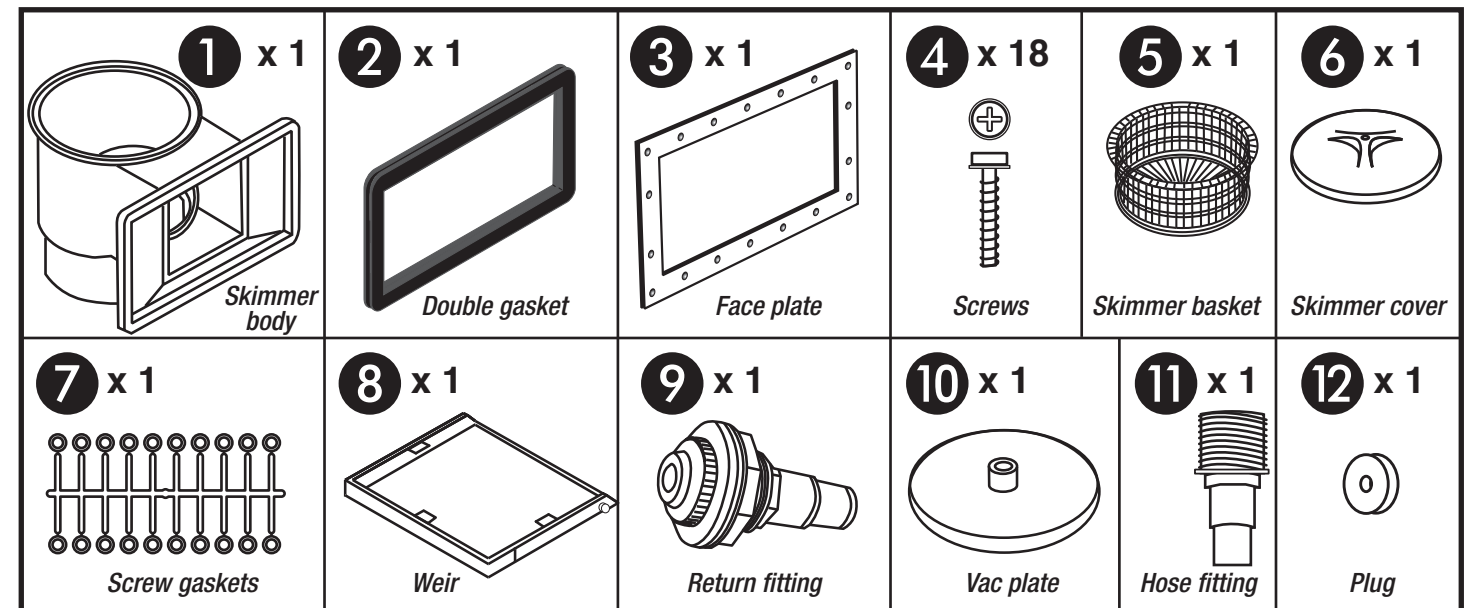
STEP 7.5 Working from the inside of the pool, screw on the adjustable directional eyeball fitting (9A) into the face of the return fitting (9B). Position the directional eyeball fitting away from the skimmer opening.

NOTE: Always be sure to check and stop any leaks at the skimmer and return fittings as these leaks can cause pool wall damage, leading to possible pool wall failure.

RECOMMENDED WINTERIZING PROCEDURE:

Remove eyeball fitting and securely plug wall fitting (1-1/2" threaded winterizing plugs are available from the dealer). Disconnect filter hoses from the skimmer and the return wall fitting. Be sure that the skimmer is kept free of water accumulation and do not plug the bottom of the skimmer. Installing a skimmer winterizing plate is recommended during the off-season to help prevent winter damage. (skimmer winterizing plates are available from the dealer). **Warranty does not include damage caused by ice forming in the Thru-wall skimmer.**

Hardware

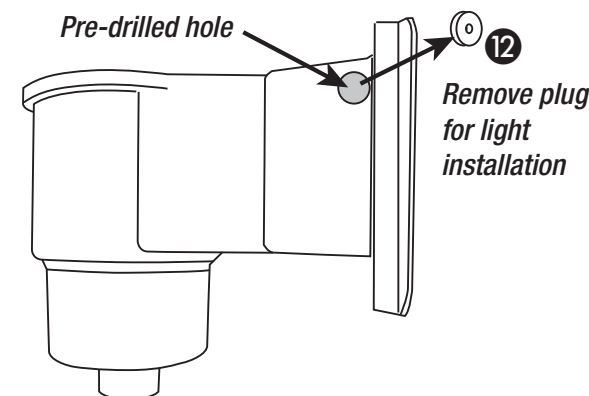


IMPORTANT

Fill the swimming pool with approximately 2 feet of water prior to installing the Thru-wall skimmer. This will allow the vinyl liner to stretch properly into position.

REMINDER

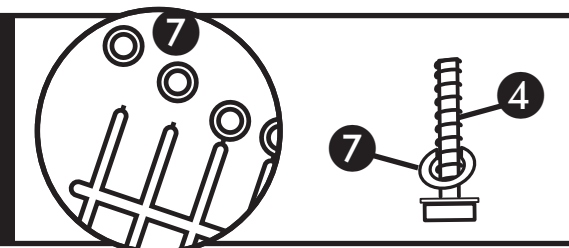
The vinyl liner cannot be moved or shifted after the skimmer and return jet holes have been cut in the liner.



NOTE: This skimmer has a predrilled hole for installation for the LED Skimmer Face Plate Light (ACM-197, ACM-197C).

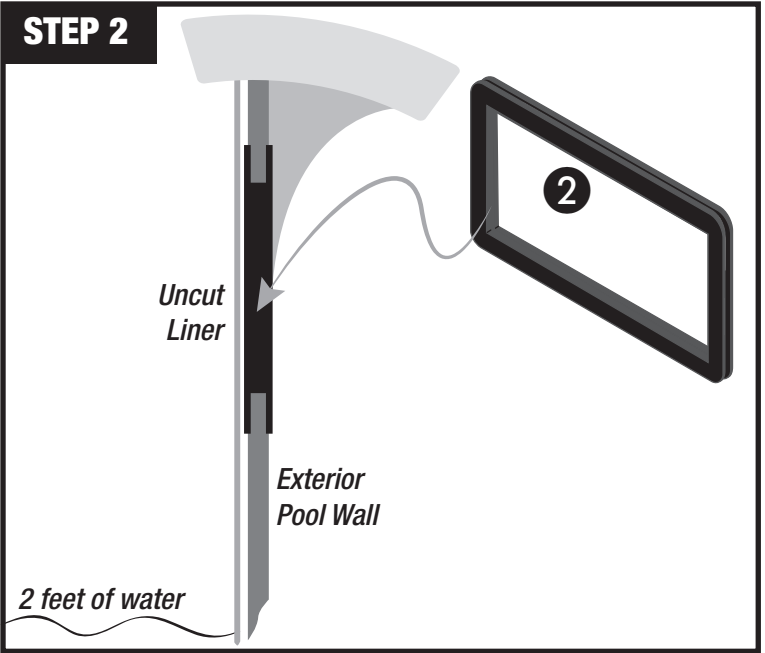
If you are using an LED Skimmer Face Plate Light, remove the plug (12) from the predrilled hole.

STEP 1 PREPARE



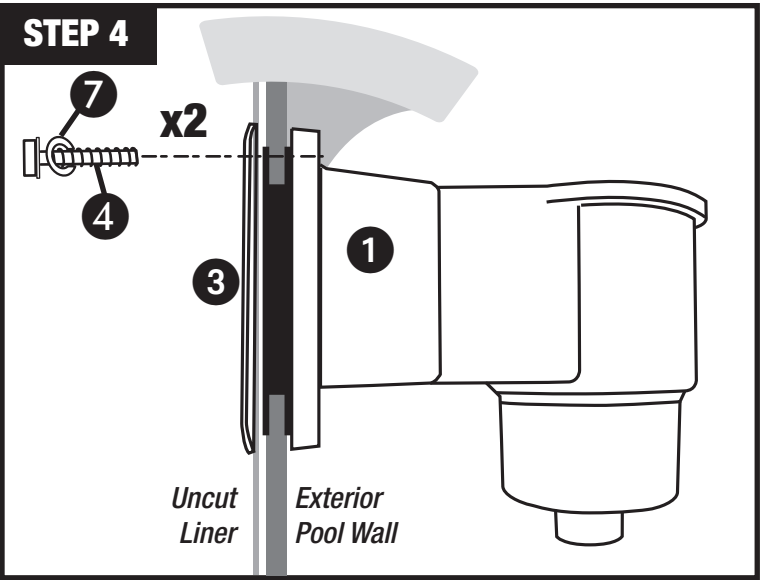
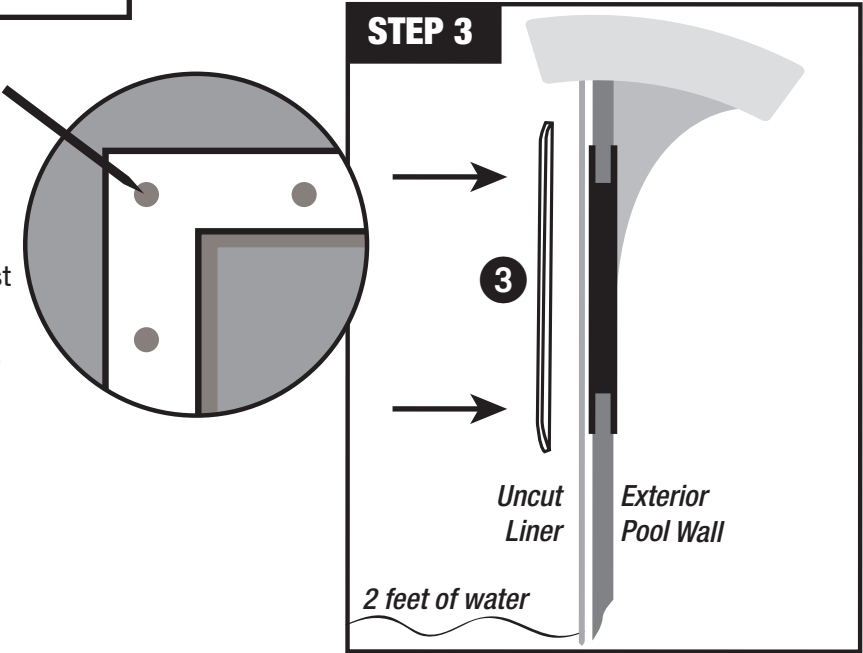
STEP 1 Carefully detach rubber gaskets (7) from runner. Insert gaskets (7) onto screws (4).

NOTE: only 18 gaskets are needed.



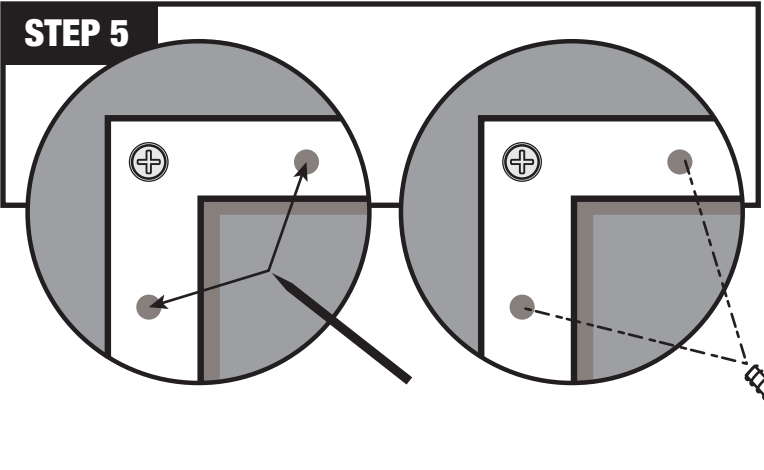
STEP 2 Working from the outside of the pool, install the double gasket (2) into the skimmer cutout on the pool wall. For a new pool installation, the inside part of the double gasket would be placed on the metal pool wall, behind the liner. If it's an existing pool, the inside part of the gasket can be placed in either location (behind or on top of the vinyl liner). The outside part of the double gasket always sits against the outside of the metal pool wall. Position the gasket so the screw holes align with the screw holes in skimmer cutout.

STEP 3 Working from inside the pool, align and carefully press the face plate (3) and liner against the gasket and skimmer cutout in the pool wall. Carefully pierce the vinyl liner starting at the two top corner holes of the face plate using a pointy tool before inserting the screws.



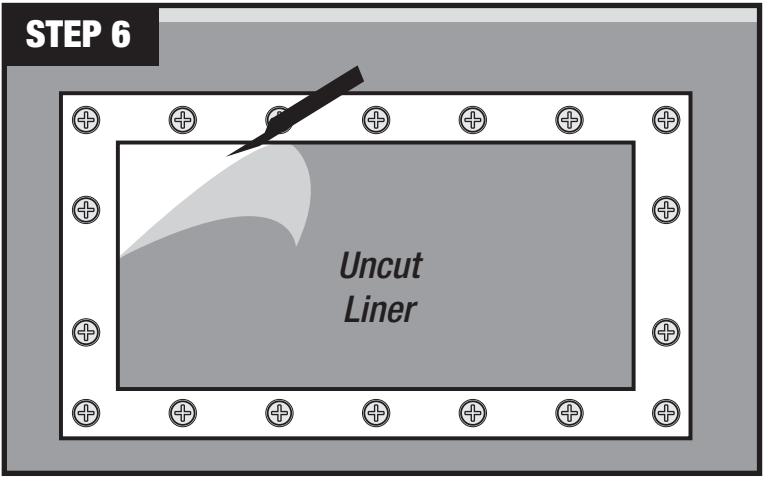
STEP 4 Push and insert the screws with gaskets (4/7) through the two holes that have been pierced in the liner. Working from outside the pool, align the skimmer body (1) with these screws. Lightly tighten the two screws.

Carefully pierce liner with a pointy tool before inserting screws. Using 18 screws with gaskets (4/7) and beginning with the four corners, lightly fasten face plate (3) to skimmer body (1) (ensuring that gasket remains well aligned). Once all screws are in place tighten screws securely (**DO NOT OVER-TIGHTEN**).

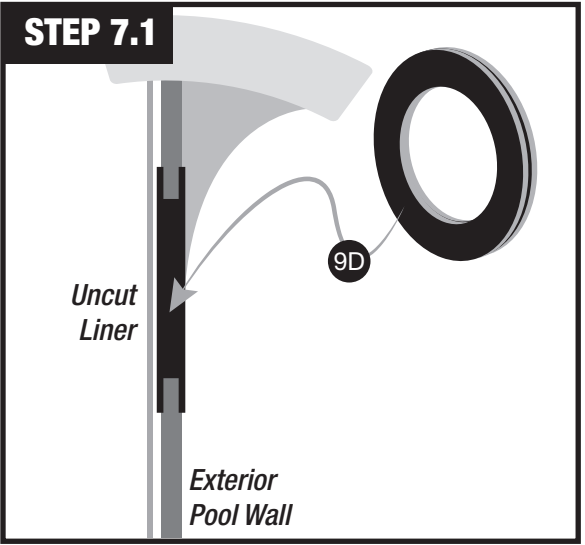
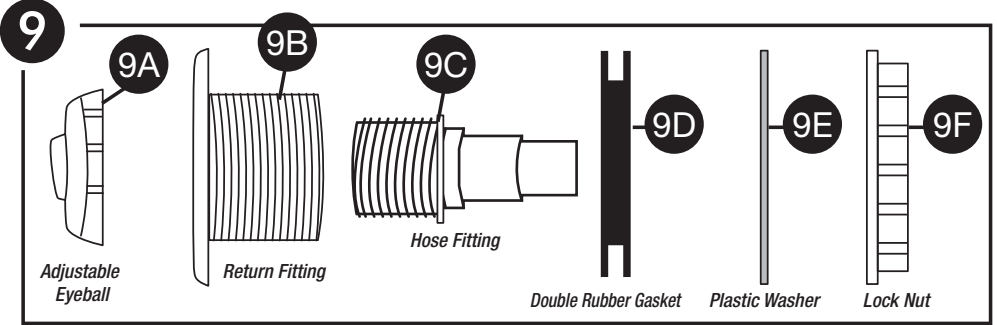


STEP 5 Using a pointy tool, pierce the remaining holes in the liner. Insert and lightly tighten the remaining screws with gaskets (4/7) through the face plate (3), liner, double gasket (2) and into the corresponding holes on the skimmer (1). Firmly tighten all screws evenly starting at opposing corners, alternating top to bottom and from left to right (**DO NOT OVER-TIGHTEN**).

STEP 6 Use a utility knife to carefully cut the vinyl liner inside of the skimmer only, be careful not to cut the double gasket. This will create the opening in the Thru-wall skimmer.



STEP 7 **Return Fitting Installation**
(continued on back page)



STEP 7.1 Working from the outside of the pool, install the return fitting double gasket (9D) at the return cutout in the pool wall. For a new pool installation, the inside part of the double gasket would be placed on the metal pool wall, behind the liner. If it's an existing pool, the inside part of the gasket can be placed in either location (behind or on top of the vinyl liner). The outside part of the double gasket always sits against the outside of the metal pool wall.